



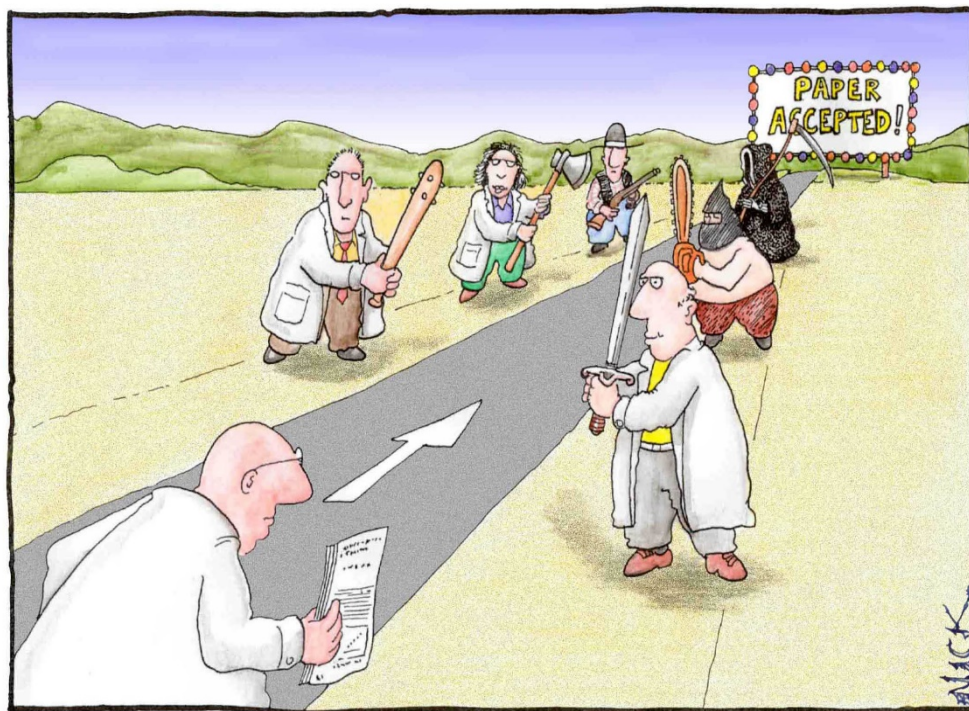
**SUCCESSFUL  
REGIONAL  
TRANSFORMATION**

*an example...*

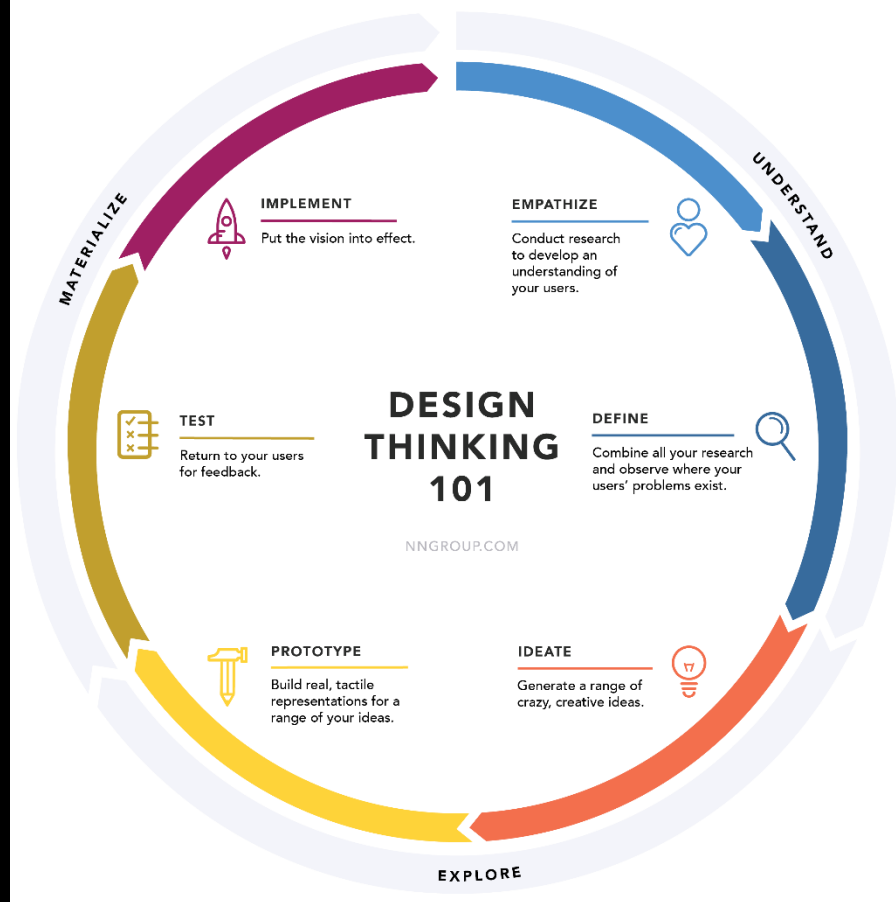


# USA

# EUROPE



Most scientists regarded the new streamlined peer-review process as 'quite an improvement.'



Linear thinking  
Change Cities -  
Incrementally

Leap-frogging  
Make Cities  
Better - FAST



# RAPID URBAN PROTOTYPING

**BEFORE**

**AFTER**

**PROTOTYPE THE CHANGE YOU  
WANT TO SEE IN THE WORLD**



[urbanproto.org](http://urbanproto.org)



# ECODISTRICT

# IBA

(Internationale Bau Ausstellung  
= International Building Exhibit)

3 Imperatives:

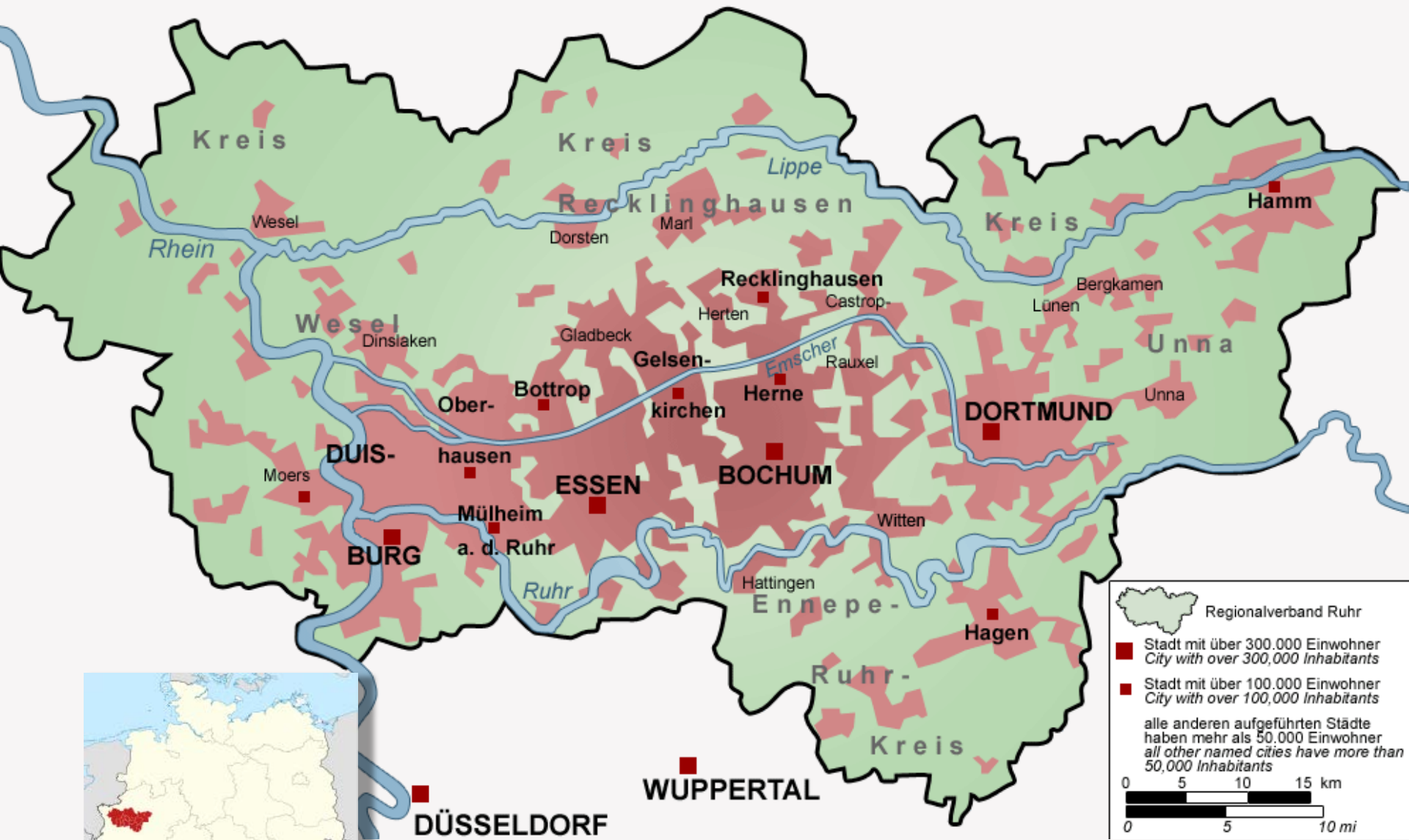
- Equity
- Resilience
- Climate Protection

Essentially an Eco-District, **plus**

- Experiments in Zoning
- Experiments in Planning Process
- Modifications and Inventions to Urban Form
- New Building Typologies

Works well in cities where alterations to buildings and urban typology are not a primary focus.





**DÜSSELDORF**

**WUPPERTAL**

**DORTMUND**

**ESSEN**

**BOCHUM**

**DUIS-**  
**BURG**

**Gelsen-**  
**kirchen**

**Bottrop**

**Recklinghausen**

**Unna**

**Hamm**

**Kreis**

**Kreis**

**Kreis**

*Lippe*

*Rhein*

**Wesel**

*Emscher*

Gladbeck

Herten

Castrop-

Lünen

Bergkamen

Dinslaken

Dorsten

Marl

Ober-

Herne

Rauxel

Unna

Moers

hausen

Mülheim

a. d. Ruhr

*Ruhr*

Hattingen

Witten

Hagen

**Ruhr-**

**Kreis**

Regionalverband Ruhr



Stadt mit über 300.000 Einwohner  
*City with over 300,000 Inhabitants*

Stadt mit über 100.000 Einwohner  
*City with over 100,000 Inhabitants*

alle anderen aufgeführten Städte haben mehr als 50.000 Einwohner  
*all other named cities have more than 50,000 Inhabitants*

0 5 10 15 km

0 5 10 mi



























# IBA Emscher Park 1989 - 1999

Internationale Bau Ausstellung Emscher Park  
...fundamentally change the conceptual structure of the central  
Ruhrgebiet region, in response to its industrial decline.



# IBA Emscher Park 1989 - 1999

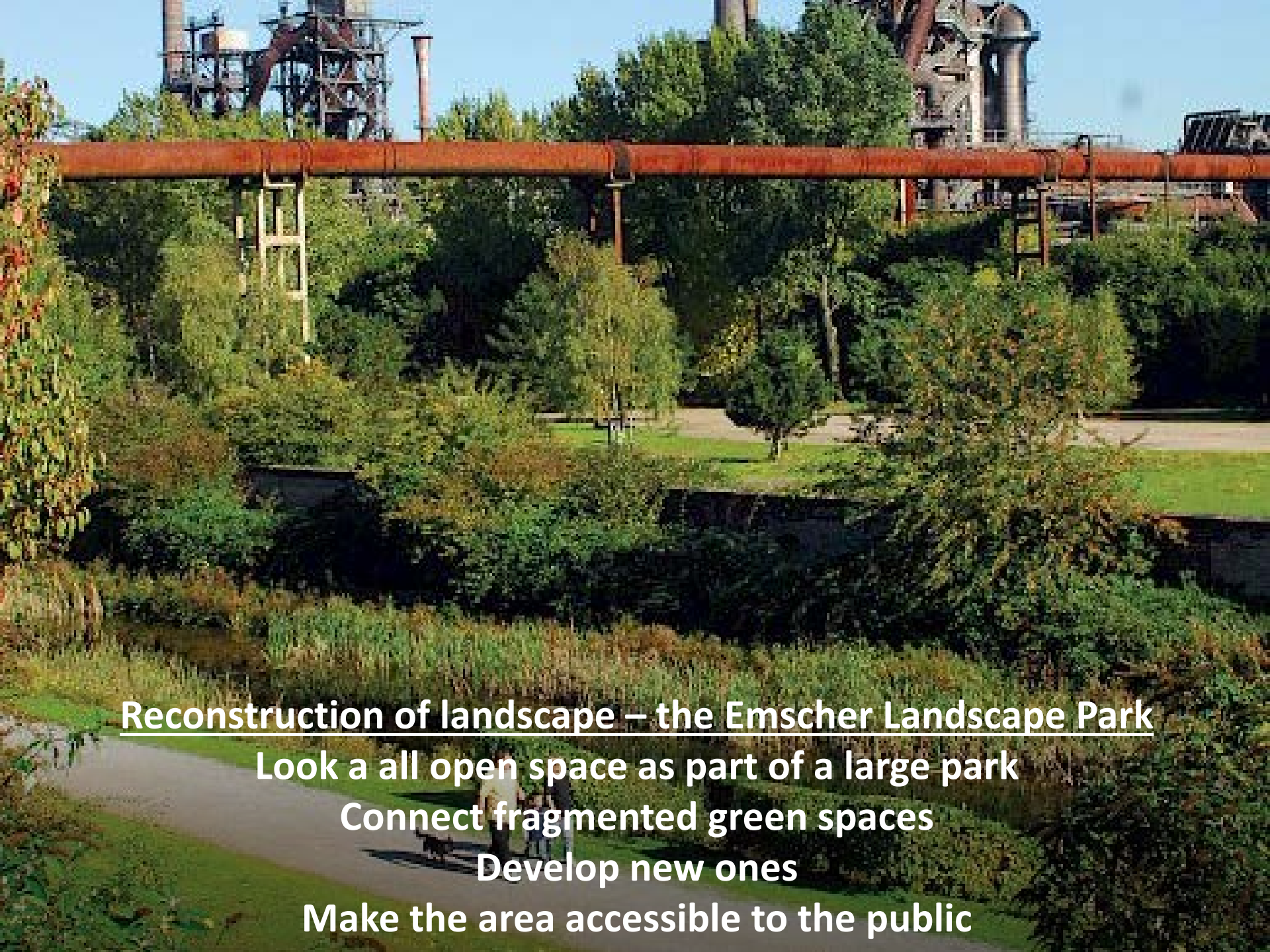
Internationale Bau Ausstellung Emscher Park  
17 cities, numerous initiatives and project partners jointly  
implemented 117 large projects with the objective of future-proofing a  
traditional industrial region.





## The 7 principles

- 1) Reconstruction of landscape – the Emscher Landscape Park
- 2) Ecological restoration of the Emscher River
- 3) Rhein- Herne Canal – an adventure space
- 4) Industrial Cultural Heritage as national treasure
- 5) Working in the park
- 6) New Forms of houses and housing
- 7) New options for social, cultural and sports activities



**Reconstruction of landscape – the Emscher Landscape Park**

**Look at all open space as part of a large park**

**Connect fragmented green spaces**

**Develop new ones**

**Make the area accessible to the public**

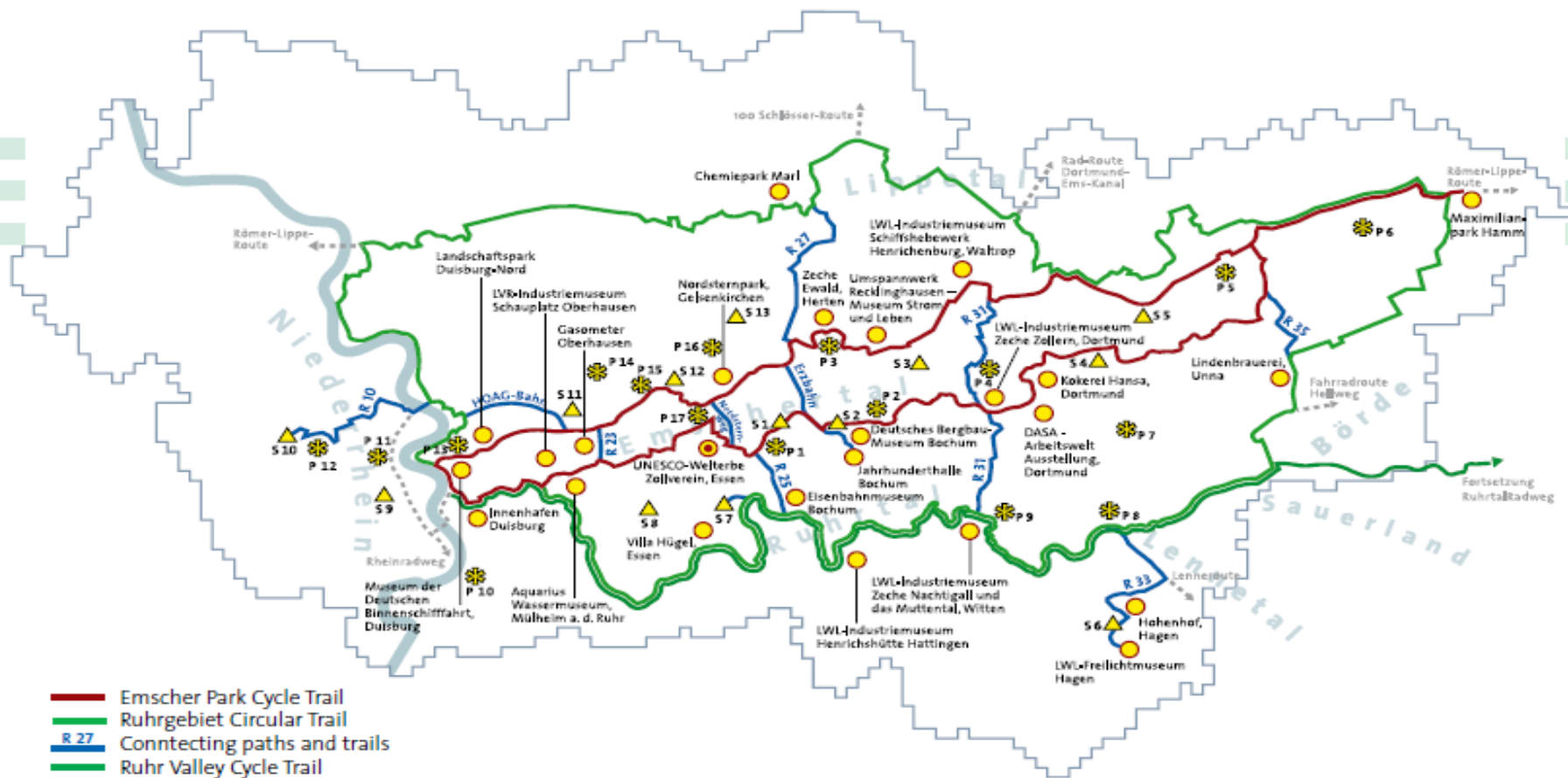




Reconstruction of landscape – the Emscher Landscape Park  
Convert existing but abandoned freight railway dams into a new bike network



# Industrial Heritage Trail by Bike



- Emscher Park Cycle Trail
- Ruhrgebiet Circular Trail
- R 27 Connecting paths and trails
- Ruhr Valley Cycle Trail
- — — — Connection to other tourist routes
- **Anchor Points**  
\* Top venues and information points
- **RUHR.VISITORCENTER Essen**  
Portal of the Industrial Heritage
- **ERIH Anchor Points**  
European Route of Industrial Heritage  
\* North Duisburg Landscape Park  
\* Oberhausen Gasometer  
\* LWL Zollern Colliery Industrial Museum  
\* Zollverein World Heritage site
- ▲ **Significant housing settlements**  
\* The Ruhrgebiet at home
- ✿ **Industrial landscape panorama points**  
\* provide an overview

**RevierRad**  
 Mülheim HQ - Central Station  
 Dieter-aus-dem-Siepen-Platz 3  
 45468 Mülheim an der Ruhr  
 Tel.: 0208/8485720, Mo-Fr 8-17  
 E-Mail: zentrale@revierrad.de  
 www.revierrad.de  
 Opening hours: Mon-Fri 5.30-22.30  
 Sat-Sun/public holidays 8-18.30





**Ecological restoration of the river Emscher system**

**New stormwater infrastructure paid for by new urban developments  
along the banks of the rivers and streams**





**Rhein-Herne Canal – an adventure space**

**New leisure uses in exchange for limited commercial development**





**Industrial cultural heritage as national treasure**

**Creating a unique atmosphere and identification by restoring and presenting the relics of 150 years of industrial history.**

**Adapt and reuse smaller buildings, and convert large installations into popular sites with millions of visitors per year.**





## Working in the park

Redevelop former mine of steel sites into attractive, green and modern workplaces.

Develop innovative methods to deal with ecological damage, such as encapsulation of polluted soil, or experimental polluted storm water management.





## New forms of houses and housing

The local traditional urban form is a garden city. A back to the roots movement restored and adapted older developments...





New forms of houses and housing

The traditional urban form is a garden city. A back to the roots movement restored and adapted older developments...





New forms of houses and housing

The traditional urban form is a garden city. A back to the roots movement restored and adapted older developments...





## New forms of houses and housing

The traditional urban form is a garden city. A back to the roots movement restored and adapted older developments...







New forms of houses and housing

New housing was developed following the traditional urban forms

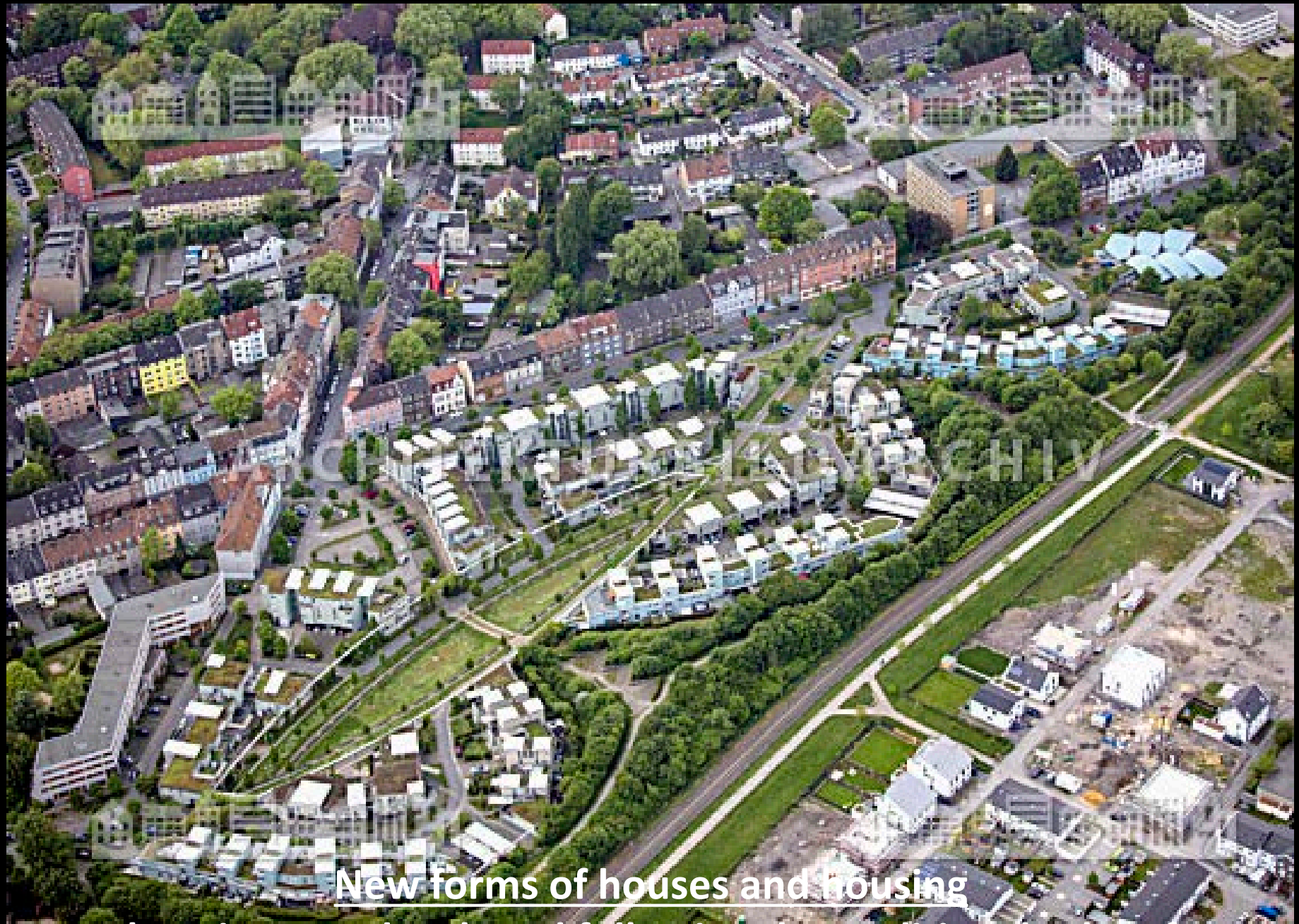




New forms of houses and housing

New housing was developed following the traditional urban forms





**New forms of houses and housing**

**New housing was developed following the traditional urban forms**





New forms of houses and housing

New housing was developed following the traditional urban forms





New forms of houses and housing

New housing was developed following the traditional urban forms





**New options for social, cultural and sports activities**

**With reduced worktimes, attention was paid to positively structure leisure times. Urban gardening and cultural events in combination with the orchestration of cultural heritage are the main focus.**









# IGA – 2027

Internationale Garten Ausstellung Ruhr  
International Garden Exhibit Ruhr



# PROCESS (lasts typically 10-12 years)

Phase 1 – **Initiation**; identifies the core issues addressed during the IBA. Establish IBA legal structure. Appoint board of trustees.

Phase 2 – **Framework**; create the aspirational outlines of intellectual / design pursuit for IBA projects.

Phase 3 – **Property Identification**; catalogue individual properties that will participate in the IBA projects.

Phase 4 – **New Urban Design**; through international competitions for ideas, obtain urban design proposals for individual urban zones identified to be subject of the IBAs. That winner will then be paired with local planning expertise to create a new specific plan, only for the duration and purpose of the IBA.

Phase 5 – **Individual Property Assignments**; public properties are made available for development at conditions “too good to refuse”; under the conditions that the developer will build the winning competition projects.

Phase 6 – **Design Competitions and Construction**; hold open international architectural design competitions, and chose a winner. That winner will then be paired with a local architect of record, and the project is being built by the private development community.

Phase 7 – **The Final Year**; a series of events analyze and celebrate the accomplishments of the IBA; what worked, what failed, what lessons can be learned and what general rules can be extrapolated.



**[www.open-iba.de/en](http://www.open-iba.de/en)**